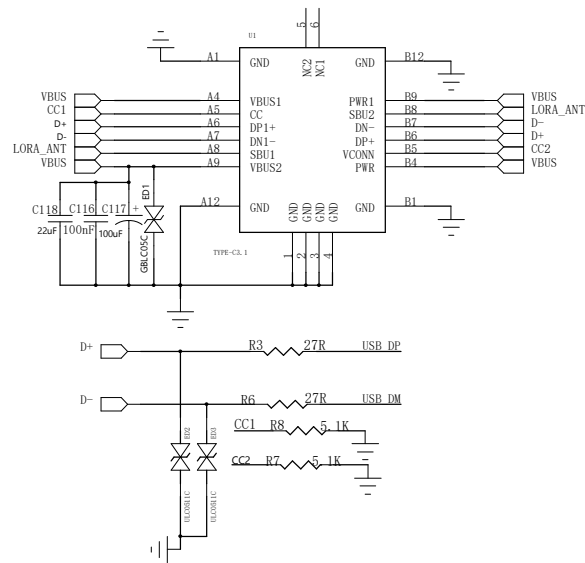
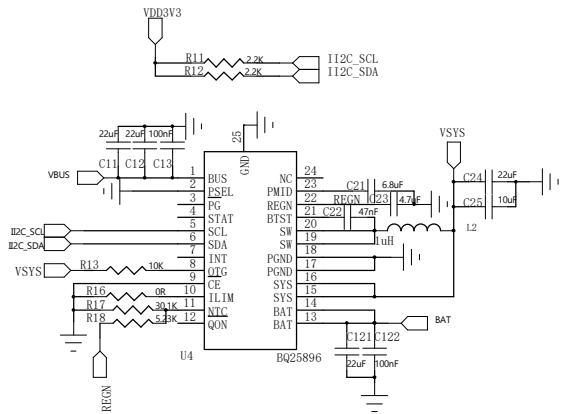


TYPE-C



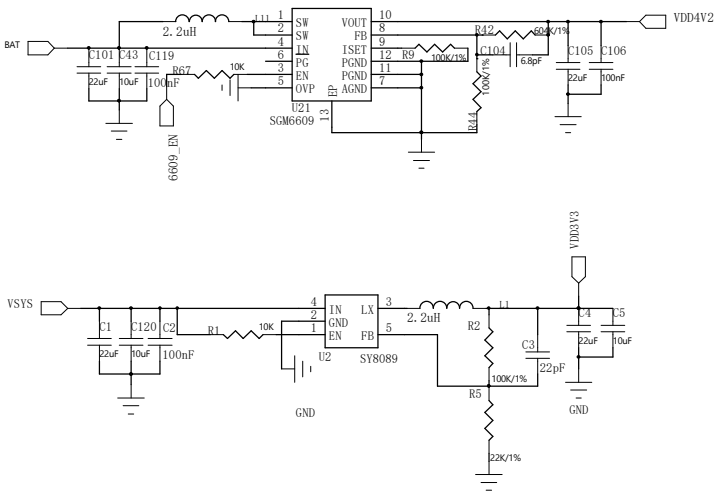
充电电路

SCL-----IO14
SDA-----IO13

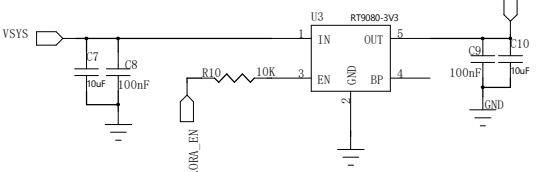


DCDC电源

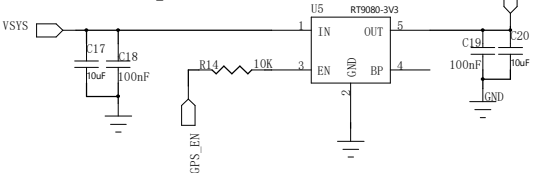
6609_EN-----IO41



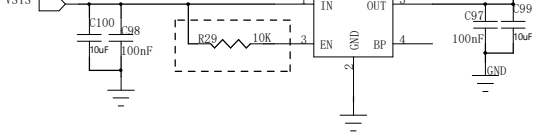
LORA_EN-----IO46



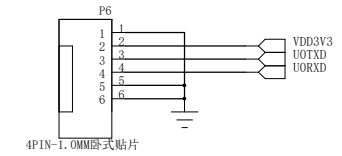
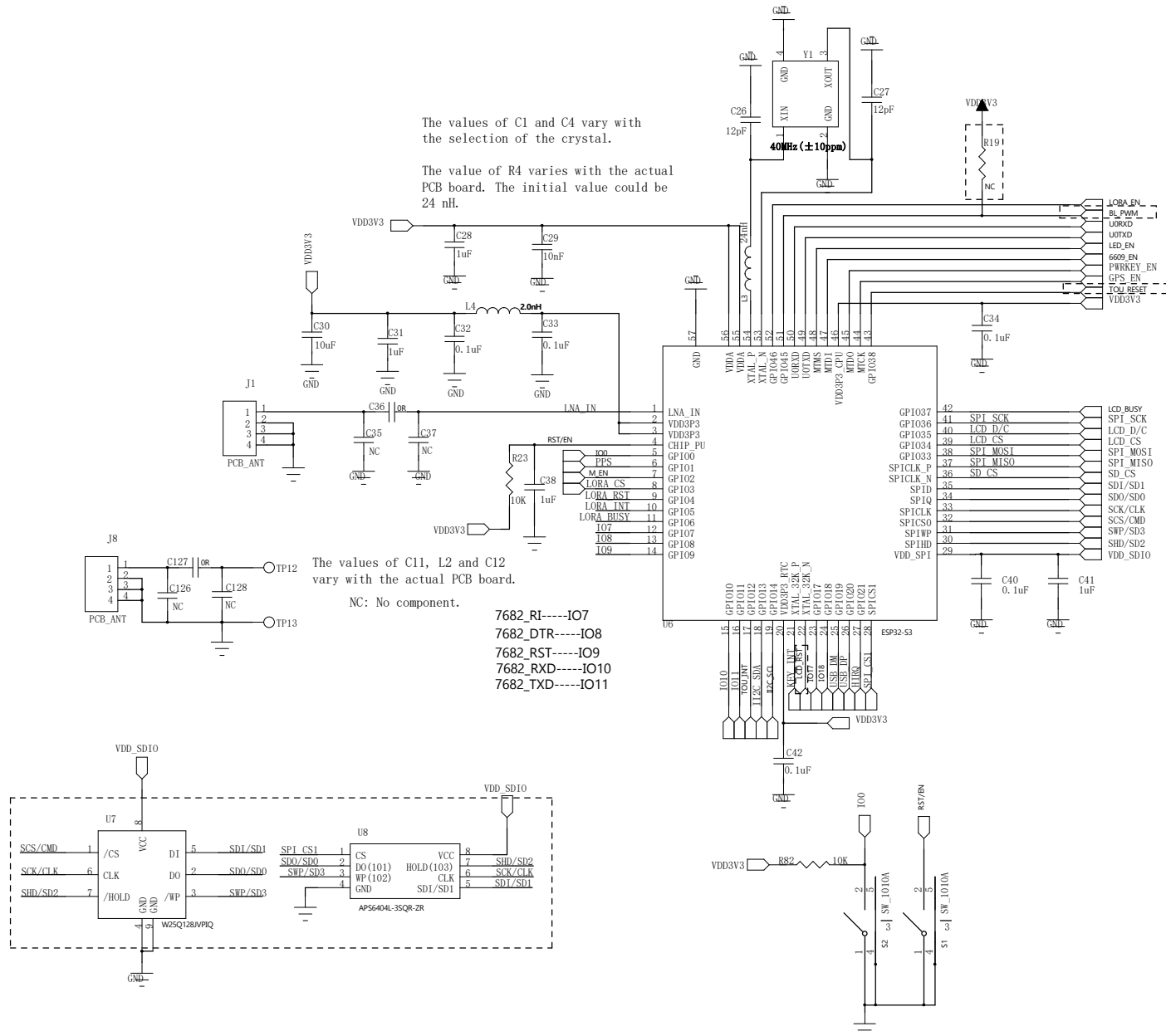
GPS_EN-----IO39

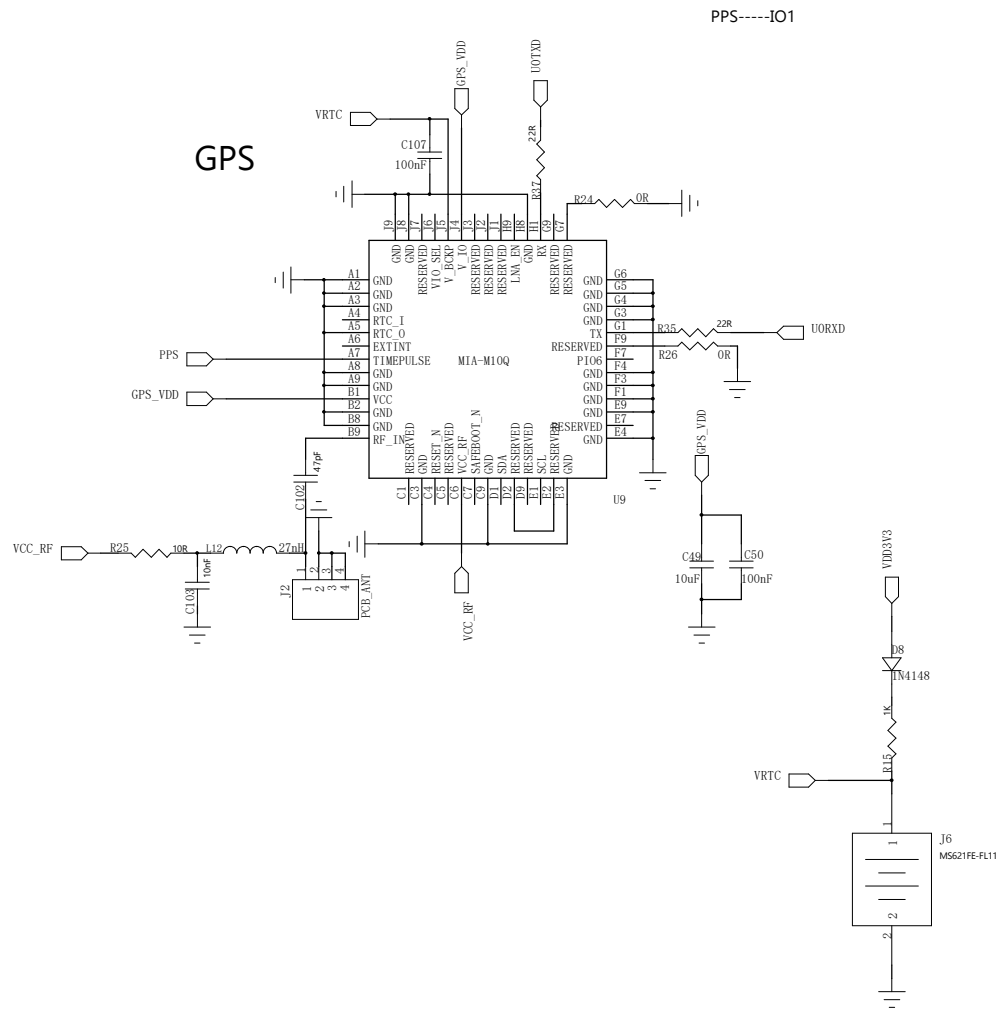


VDD1V8

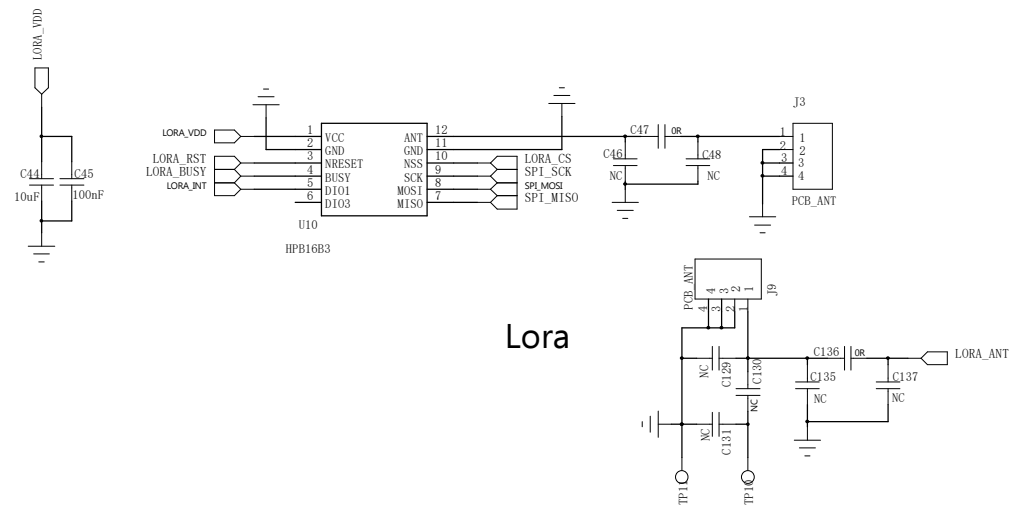


ESP32-S3

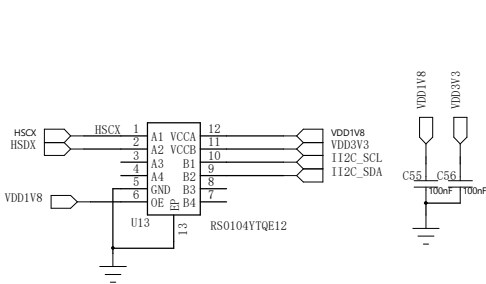
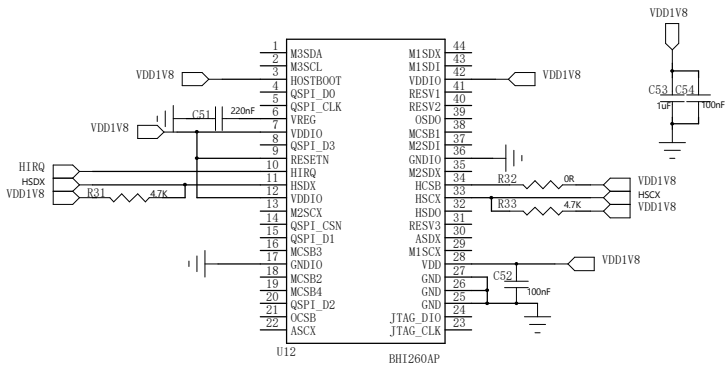




LORA_INT-----IO5
 LORA_BUSY-----IO6
 LORA_RST-----IO4
 MISO-----IO47
 MOSI-----IO33
 SCK-----IO36
 LORA_CS-----IO3

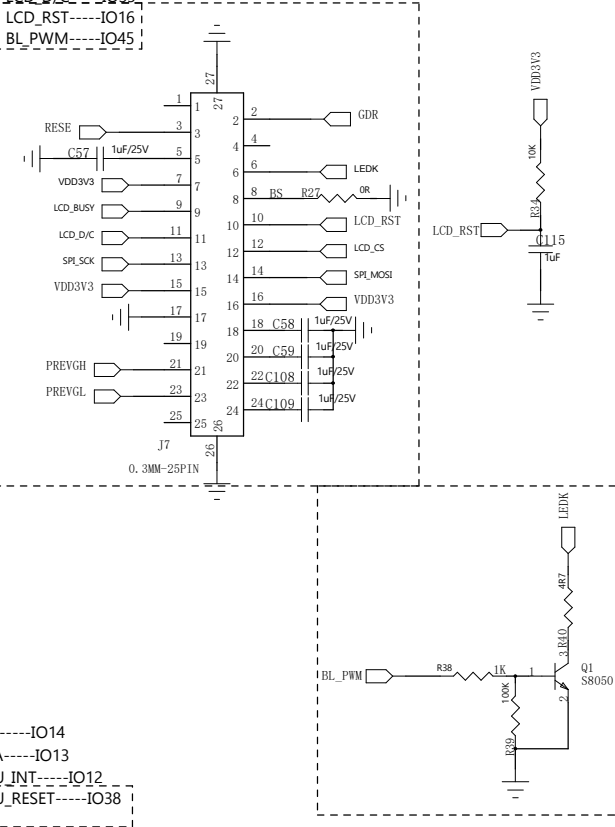


SCL-----IO14
SDA-----IO13
HIRQ-----IO21



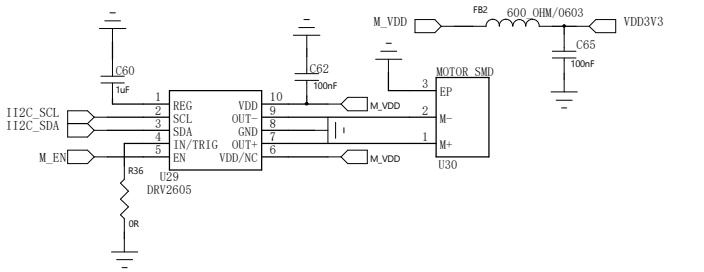
LCD

LCD_BUSY-----IO37
MOSI-----IO33
SCK-----IO36
LCD_CS-----IO34
LCD_D/C-----IO35
LCD_RST-----IO16
BL_PWM-----IO45



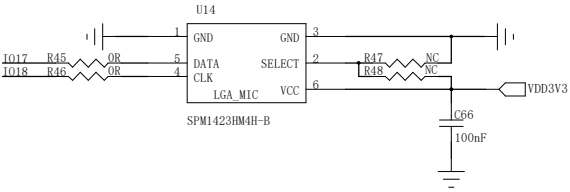
马达

M_EN-----IO2
SCL-----IO14
SDA-----IO13

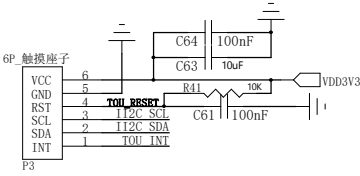


I2C Address:0x5A

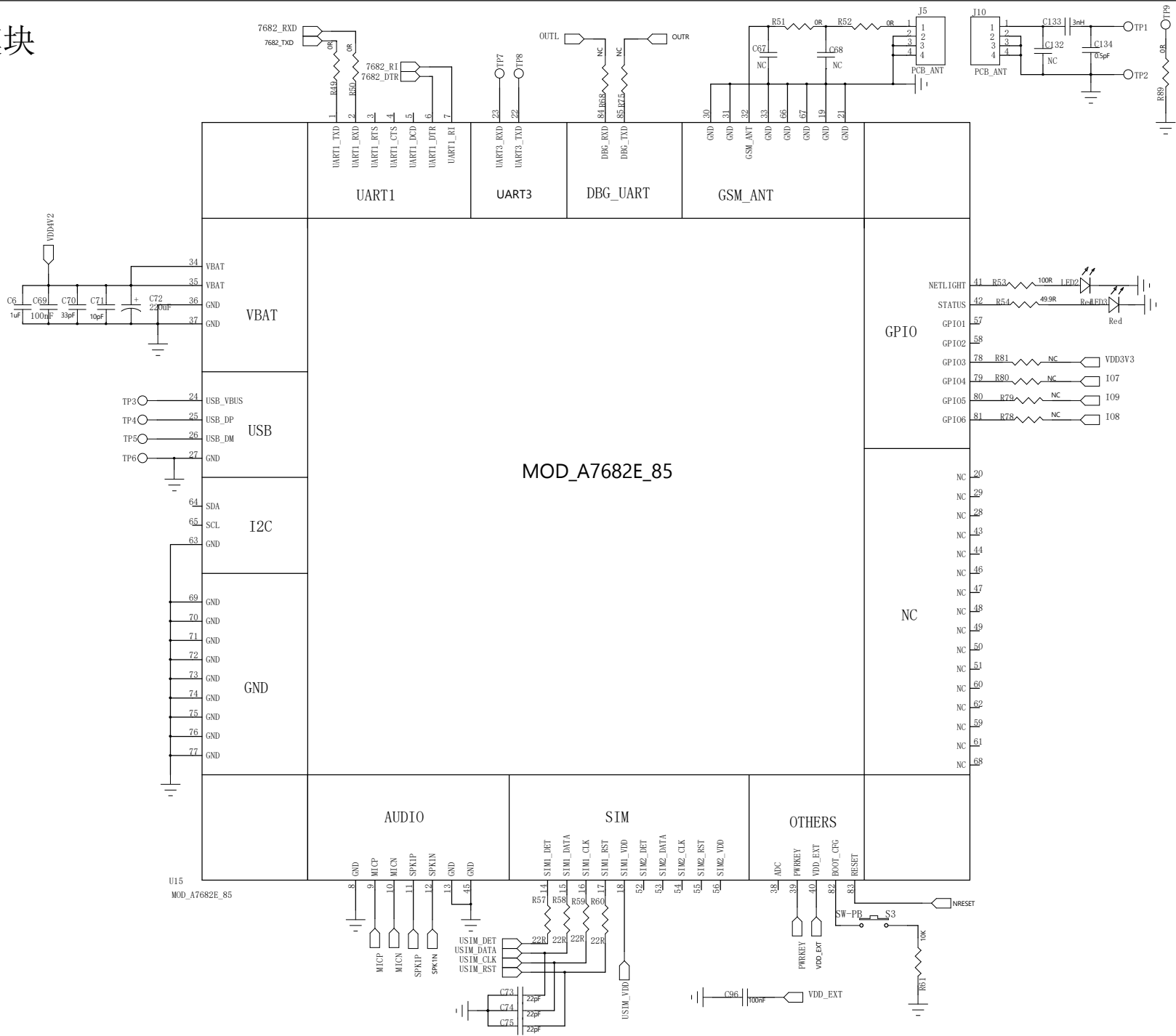
麦克风



触摸



7682模块



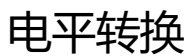
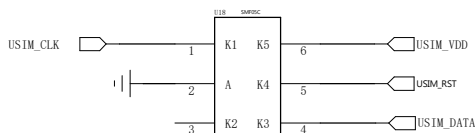
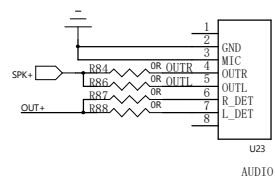


Figure 10 is a schematic diagram showing the SPI interface connection between the WL-SIM31N2-238 (U24) and an external SPI device (U25). The diagram includes the following components and connections:

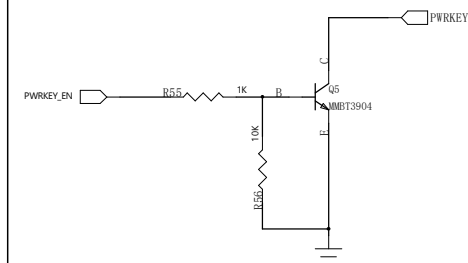
- WL-SIM31N2-238 (U24):**
 - USIM_VDD:** Connected to VCC1 of U25.
 - USIM_RST:** Connected to RST1 of U25.
 - USIM_CLK:** Connected to CLK1 of U25.
 - USIM_DATA:** Connected to DATA1 of U25.
 - USIM_DET:** Connected to SGND of U25.
 - USIM_MISO:** Connected to MISO1 of U25.
- External SPI Device (U25):**
 - SD_CS:** Connected to VCC1 of U25.
 - SPI_MOSI:** Connected to MOSI1 of U25.
 - VDD3V3:** Connected to VCC1 of U25.
 - SPI_SCK:** Connected to SCK1 of U25.
 - SPI_MISO:** Connected to MISO1 of U25.
- Capacitors:**
 - A 100nF capacitor is connected to VCC1 of U25.
 - A 1uF capacitor is connected to VCC1 of U25.



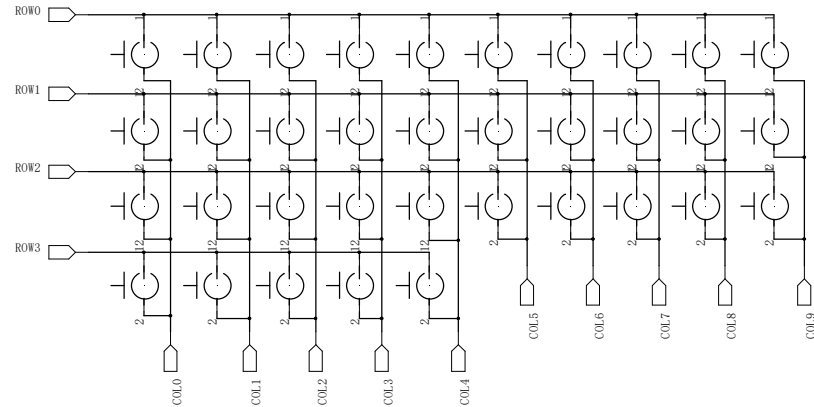
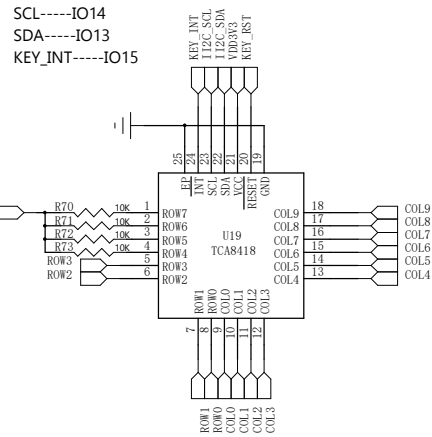
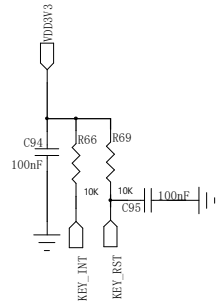
3.5mm耳机接口



PWRKEY



矩阵按键



按键灯

